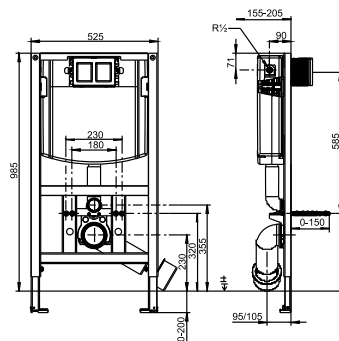
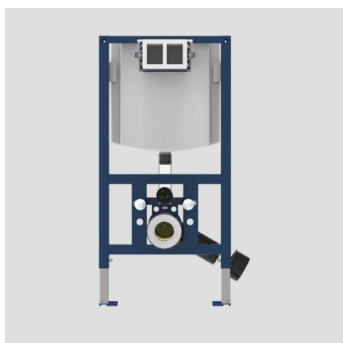


90.738.00..T000

SANIT WC element INEO FRONTOP 985



Item number	Product description
90.738.00..T000	<p>WC element INEO FronTop 985 equipped with INEO FRESH box for water box cube, for wall-hung WC with mounting distance 180/230 mm, with small access opening, front/top operated, h/w/d: 985/525/155 mm, self-supporting, powder-coated steel frame, for covering with plasterboard, installation onto a solid wall, in drywall constructions etc., 4-point fastening, fully pre-assembled, includes self-locking feet with swivel base plates and fastening set, adjustment range of feet from unfinished floor level to upper edge of finished floor level: 0-200 mm, adjustment range front to wall: 155-205 mm (when mounted on wall brackets code no. 17.257.00..T000), SANIT concealed cistern with insulation against condensation (CC-122-S-UO-2V-2C), with dual flush (6-4.5l/4-2l) and flexible cable technology, factory setting 6 and 3 litres, with protection cap for the flush pipe, SANIT fill valve Noise Class I, angle valve R 1/2, 4-position adjustable mounting clip, WC connecting bend 90° DN 90 (d:90)/DN 100 (d:110) with protection cap, SANIT complete WC connection set DN90 (d:90)/180 mm, protection box for access opening can be cut to size, flexible hose to fill valve, can be screwed by hand, 2 M12 WC retaining bolts, installation instructions, without push plate, packed in a box Concealed cistern tested to DIN EN 14055, Noise Class I The cleaning cubes being used must be suitable for WC plastic cisterns and must not contain chlorine or any oxidizing components, otherwise the cistern may be damaged (e.g. stress cracking).</p> <p>Accessories: - fastenings (wall brackets, feet, bottom wall bracket) - WC flush actuators - sound-absorbing sets - WC connectors (double bend, offset connection bend, etc.) - cladding panel code no. 17.115.00..S000 - roughing-in set for shower toilet code no. 03.956.00..0000 - adjustable flush reducer code no. 05.261.00..0000</p>